

Flexible multi-communication platforms



MP 2550/MP 2550B Aficio™

MP 3350/MP 3350B Aficio™

The answer to all your document handling needs

Setting the pace in black-and-white

The high-performance MP 2550/MP 2550B and MP 3350/MP 3350B take office productivity to a whole new level. Entirely custom-made, these multifunctional all-rounders unite a variety of functionalities to streamline your workflow. Furthermore, you obtain the cutting-edge strengths Nashuatec stands for: ease of use, high productivity and state-of-the-art document management. With these highly advanced systems you are prepared to meet any modern office challenge.

MP 2550/MP 2550B

- High productivity: 25 ppm
- Outstanding usability
- Variety of customisation possibilities
- Advanced document management
- MP 2550: standard colour scanning

MP 3350/MP 3350B

- Exceptional speed: 33 ppm
- Versatile document handling
- Complete range of tailor-made options
- Handy printing tools
- MP 3350: standard colour scanning



Delivering the office power you need

How can you limit costs while improving your document handling? As the business landscape changes due to technological progress, you need a progressive solution. Combining high-tech hardware with the latest software, the MP 2550/MP 2550B and MP 3350/MP 3350B fit that description perfectly.

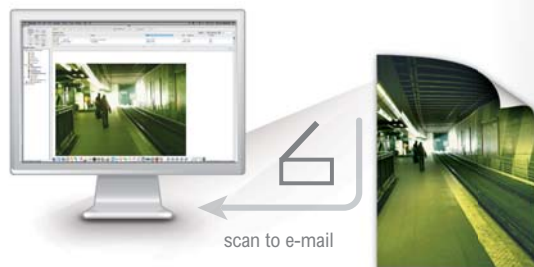


Versatile finishing

To keep your document creation in house and produce your own professional looking output, the MP 2550/MP 2550B and MP 3350/MP 3350B can be equipped with one out of three finishers. You can even create high quality booklets if you opt for the 1,000-sheet booklet finisher.

Wide media versatility

The MP 2550/MP 2550B and MP 3350/MP 3350B support a variety of paper formats from A5 to A3. You can also print on thick paper up to 157 g/m² to create report covers and flyers. The vast maximum paper capacity of 3,100 sheets allows you to effortlessly handle larger jobs. No need to waste time on continuous refills.



Unique colour scanning & distribution

To save time and costs, you can distribute your information digitally. You can send colour documents as e-mail attachments combining 'scan to e-mail' and 'colour scanning'. In addition, you can scan to URL for reduced network traffic and unlimited file size requirements. 'Scan to NCP', on the other hand, meets the needs of Novell[®] network environment users.



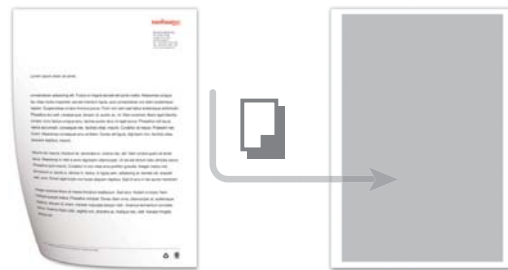


Straightforward & simple

- 8.5-inch full colour touch panel for increased usability and accessibility.
- Simplified display showing only the most frequently used functions.
- Animated user guidance in case of irregularities.
- Easy handling paper trays for easy paper replenishment.

Essential security

- Advanced access limitation (Windows® authentication).
- Erasing of temporary data on the Hard Disk Drive (Data Overwrite Security Unit).
- IP filtering & data encryption.
- Watermark protection greying out documents when copied on devices with a Copy Data Security Unit.



Copy Data Security Unit

Professional faxing

- Automatically distribute incoming faxes to e-mail or folder.
- Transmit faxes directly from the convenience of your own PC (LAN fax).
- Reduce costs by using the Internet for long distance faxing (Internet fax).
- Virtually eliminate the costs of sending (long distance) faxes by transmitting fax data over the IP/VoIP network (IP fax).

At the forefront of eco care

Like all Nashuatec products, the MP 2550/MP 2550B and MP 3350/MP 3350B reflect Nashuatec's commitment to the environment through:

- the usage of toxic free materials;
- energy-saving toner production;
- paper-saving duplex capability;
- extremely low power consumption;
- clean and quiet operation.



Meeting today's needs and tomorrow's requests

How can you speed up your workflow and make it more productive?

The MP 2550/MP 2550B and MP 3350/MP 3350B offer constructive answers. They are fully customisable and offer a variety of new, exciting benefits including excellent speeds and distribution possibilities.

- Print, copy, scan and fax from one device.
- Excellent productivity at 25/33 pages per minute.
- Paper-saving duplex capability.

Impressive productivity

As office demands increase, so does your need for a highly productive partner. The MP 2550/MP 2550B and MP 3350/MP 3350B help you work smarter and faster. They produce output at a rapid 25/33 pages per minute, with equal duplex speeds. Waiting time is further reduced with a fast 14-second warm-up and a first copy speed of 4.5 seconds.

True multitasking

Printing, copying, faxing or scanning, you can now do it all from one office device. Network connectivity is ample, so these devices can be smoothly integrated into your existing workflow. For the optimisation of your entire document handling process, efficient document management tools are available. Using advanced device monitoring, the status of networked peripherals can be monitored and checked easily through web browsers.

A wealth of customisation possibilities

At Nashuatec we design solutions to suit the way you work. The MP 2550/MP 2550B and MP 3350/MP 3350B can be customised to your exact requirements. Choose from various printer/scanner upgrade options* and build the system that perfectly meets your needs.

* RPCS™ printer unit, Printer Enhance Unit and Scanner Enhance Unit.



25/33
pages per minute

COPIER

Copying process:	Single laser beam scanning & electro photographic printing	
Copy speed:	25/33 copies per minute	
Resolution:	600 dpi	
Multiple copy:	Up to 999	
Warm-up time:	Less than 14 seconds	
First output speed:	4.5 seconds	
Zoom:	25 - 400% (in 1% steps)	
Memory:	Standard:	256 MB
	Maximum:	MP 2550B/MP 3350B: 512 MB + 40 GB Hard Disk Drive MP 2550/MP 3350: 768 MB + 40 GB Hard Disk Drive (standard)
Paper input capacity:	Standard:	2 x 500-sheet paper trays
	Maximum:	3,100 sheets
Paper output capacity:	Standard:	500 sheets
	Maximum:	1,625 sheets
Paper size:	A5 - A3	
Paper weight:	Paper tray 1/duplex tray:	60 - 105 g/m ²
	Paper tray 2/bypass tray:	52 - 157 g/m ²
Dimensions (W x D x H):	570 x 653 x 709 mm	
Weight:	Less than 60 kg	
Power source:	220 - 240 V, 50/60 Hz	
Power consumption:	Operation:	Maximum 1.4 kW

PRINTER/SCANNER (OPTION FOR MP 2550B/MP 3350B)

PRINTER

Print speed:	25/33 prints per minute	
Printer language:	Option:	PCL5e, PCL6, RPCS™ Adobe® PostScript® 3™
Resolution:	Maximum 600 x 600 dpi (2,400 x 600 dpi with smoothing)	
Interface:	Standard:	USB 2.0, Ethernet 10 base-T 100 base-TX
	Option:	Bi-directional IEEE 1284 Wireless LAN (IEEE 802.11b/a/g) Bluetooth, Gigabit Ethernet
Memory:	Maximum:	MP 2550B/MP 3350B: 512 MB + 40 GB Hard Disk Drive MP 2550/MP 3350: 768 MB + 40 GB Hard Disk Drive (standard)
Network protocol:	TCP/IP, IPX/SPX, SMB, AppleTalk	
Supported environments:	Windows® 95/98/Me/NT4.0/2000/XP Vista/Server 2003 Novell® NetWare® 3.12/3.2/4.1/4.11/5.0/5.1/6/6.5 UNIX Sun® Solaris 2.6/7/8/9/10 HP-UX 10.x/11.x/11v2 SCO OpenServer 5.0.6/5.0.7 RedHat® Linux 6.x/7.x/8.x/9.x/Enterprise IBM® AIX v4.3/5L v5.1/5L v5.2/5.3 Macintosh 8.6 or later (OS X Classic) Macintosh X v10.1 or later (native mode) SAP® R/3® (3.x or later) NDPS Gateway Netware 5.1 (SP8 or later) 6.0 (SP5 or later)/6.5 (SP3 or later) IBM® iSeries / AS/400 using OS 400 Host Print Transform	

SCANNER

Scan speed:	MP 2550B/MP 3350B:	B/W: Maximum 50 originals per minute (MH, A4/LEF)
	MP 2550/MP 3350:	Full colour: Maximum 29 originals per minute (MH, A4/LEF)
Resolution:	Maximum 600 dpi (TWAIN: 1,200 dpi)	
Original size:	A5 - A3	
Bundled drivers:	Network TWAIN	
Scan to e-mail:	SMTP, TCP/IP	
Destination addresses:	Maximum 500 per job (stored: maximum 2,000)	
Address book:	Via LDAP or locally on Hard Disk Drive	
Scan to folder:	SMB, FTP, NCP protocol (with login security)	
Destination:	Maximum 50 folders per job	

SOFTWARE

SmartDeviceMonitor™, Web SmartDeviceMonitor™ 2, Web Image Monitor, DeskTopBinder™ Lite

RPCS™ PRINTER UNIT (OPTION)

Print speed:	25/33 prints per minute	
Printer language:	Standard:	RPCS™
	Option:	PCL5e, PCL6, Adobe® PostScript® 3™
Resolution:	Maximum 600 x 600 dpi (2,400 x 600 dpi with smoothing)	

FAX (OPTION)

Circuit:	PSTN, PBX	
Compatibility:	ITU-T (CCITT) G3 ITU-T (T.37) Internet Fax ITU-T (T.38) IP Fax (print/scan functionality required)	
Modem speed:	Maximum 33.6 Kbps	
Resolution:	Standard/detail:	200 x 100/200 dpi
	Maximum:	400 x 400 dpi (option)
Compression method:	MH, MR, MMR, JBIG	
Scanning speed:	Less than 0.56 seconds (200 x 100 dpi, A4/SEF)	
Memory:	Standard/maximum:	12/44 MB
Memory backup:	Yes	

OTHER OPTIONS

Platen cover, 50-sheet Automatic Reverse Document Feeder, 100-sheet multi-bypass tray, 2 x 500-sheet paper trays, 2,000-sheet large capacity tray, 125-sheet one-bin tray, 500-sheet finisher, 1,000-sheet finisher, 1,000-sheet booklet finisher, Shift sort tray, Duplex unit, 2nd Super G3 port, Data Overwrite Security Unit, Copy Data Security Unit, File Format Converter, User Account Enhance Unit, Browser Unit, Scanner upgrade (for printer option), Printer upgrade (for RPCS™ printer unit), VM Card (Java™), Key Counter Bracket, PI Board, Bridge Unit, Interchange Unit, Professional software solutions

For availability of models, optional apparatus and software, please consult your local Nashuatec supplier.

